

English Language Learner Network for ELL Program Coordinators

November 17, 2020, January 12, April 20, May 18, 2021

2:00-4:00 pm
Virtual via Zoom

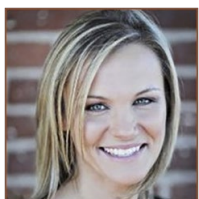
Are you in charge of EL programming, and are you grappling with program models, assessment, language intake, teacher evaluation, and other pressing programming decisions related to ELL? Join this network of EL program coordinators to meet, greet, and extend networking and working relationships in the same field.

This Network will:

- Provide a networking opportunity for all area EL program coordinators/supervisors.
- Share and develop new and innovative EL programming ideas and professional development.
- Look deeper into programming obstacles and collaborate on solutions.
- Review essential leadership skills to advocate for marginalized populations.
- Address Distance, Hybrid, and In-person EL Programming.
- Address racial equity in English EL programs and beyond the language learner.

This network is participant driven and content will be based off the needs determined by participants.

Facilitator, Martina Wagner, Ed. D



Dr. Martina Wagner has a background in serving English Language Learners that has spanned over twenty years in grades pre-K through adult education. Her professional passions and expertise include best practice and programming for ELs, Sheltered Instruction (SIOP®), Co-teaching, Special Education Identifications of ELs, WIDA assessments, and English Language Learning assessments and data

Registration Information:

Cost:

\$75 [Metro ECSU Member](#)

\$150 Non-member

(This fee covers all four events)

Register online:

<http://metroecsus.myquickreg.com/register/event>



Registration Deadline:

November 17, 2020

Cancellation Deadline:

November 13, 2020

Registration Contact:

Angela Skrade, 612.638.1528;

angela.skrade@metroecsus.org

In compliance with the Americans with Disabilities Act, when special accommodations are needed, contact Angela Skrade (612-638-1528; angela.skrade@metroecsus.org) at least two (2) weeks before the event date. Special accommodation cancellation notices are accepted no later than two (2) business days before the event date. Cancellations after the deadline will be billed for special accommodations fees.

Metro ECSU 2 Pine Tree Drive Ste 101 Arden Hills MN. 55112 P 612.638.1500 www.metroecsus.org