

# CLEAR Training

January 20, February 3, February 17, March 3, 2021

3:00 pm – 5:00 pm

(Virtual via Zoom)



Today's students are increasingly more diverse in their cultures, languages, abilities, interests and learning styles. As educators we are held accountable to ensure that all learners achieve state standards. Thus, we must create classroom environments where student differences are supported and celebrated so that all students have the best opportunity to learn.

## What is CLEAR?

The CLEAR Model is aligned with equity and language as part of a district wide response to the need for culturally and linguistically responsive instruction:

**Cultural**-Emphasizes the human purpose of what is being learned and its relationship to the students' own culture.

**Linguistic Learning**-Encourages students to make choices in content and assessment with support for language development through methods based on their experiences, values, needs, and strengths.

**Equitable**-Respectful learning environments in which students' racial and ethnic diversity is valued and contributes to successful academic outcomes.

**Achievement**-Includes multiple ways to represent knowledge and skills and allow for attainment of outcomes at different points in time.

**Responsive**-Through positive relationships, rigorous learning experiences are created involving higher order thinking and critical analysis.

Simply put CLEAR is responding to the cultural diversity of students within instructional activities and shifting mindsets. To accomplish this teachers, leaders, and support staff must be culturally proficient in relating to their students, programs, and community.



Metro ECSU 2 Pine Tree Drive Ste 101 Arden Hills MN 55112  
P 612.638.1500 [www.metroecs.org](http://www.metroecs.org)

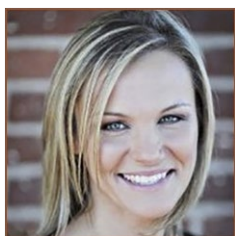
### Participants will:

- Explore the equity framework as it relates to planning and instruction.
- Investigate culture and how classrooms, schools, and district can climb out of the culture gap
- Build the foundations of Learning Partnerships: taking dependent learners to independence
- Build Intellectual Capacity through Culturally Responsive Teaching Methods
- Establish an Alliance of Learning between students and systems
- Shift academic mindset in learning partnerships
- Establish a link between language and culture: Building your Toolkit for Application

**Target Audience:** Educators, Leaders, and support staff

\*This training is designed as a 4-day learning series that is anchored in Culturally Responsive Teaching and Learning.

### Facilitator, Martina Wagner, Ed. D



Dr. Martina Wagner has a background in serving English Language Learners that has spanned over twenty years in grades pre-K through adult education. Her professional passions and expertise include best practice and programming for ELs, Sheltered Instruction (SIOP®), Co-teaching, Special Education Identifications of ELs, WIDA assessments, and English Language Learning assessments and data.

---

### Registration Information

**Cost:** \$200 Metro ECSU Member \*  
(Only \$50 per session!)  
\$260 Non-member

**Register Online:**

<http://metroecsus.myquickreg.com/register/event>

**Registration Deadline:** January 20, 2021

**Cancellation Deadline:** January 18, 2020

**Registration Contact:**

Angela Skrade, 612-638-1528;  
[angela.skrade@metroecsus.org](mailto:angela.skrade@metroecsus.org)

**Location:**

Virtual via Zoom. Link provided upon registration.



**\$10 Processing fee applies to all invoices.** Send check payable to Metro ECSU, 2 Pine Tree Dr. Suite 101, Arden Hills, MN 55112, Attn: Angela Skrade

---

In compliance with the Americans with Disabilities Act, when special accommodations are needed, contact Angela Skrade (612-638-1528; [angela.skrade@metroecsus.org](mailto:angela.skrade@metroecsus.org)) at least two (2) weeks before the event date. Special accommodation cancellation notices are accepted no later than two (2) business days before the event date. Cancellations after the deadline will be billed for special accommodations fees.

**Metro ECSU 2 Pine Tree Drive Ste 101 Arden Hills MN 55112**  
**P 612.638.1500 [www.metroecsus.org](http://www.metroecsus.org)**