

Co-Teaching Training: Setting up My Partnership in Both a Face to Face and Virtual Space



****New Date & Time****
November 9, 2021,



8:00am-11:30am, Virtual

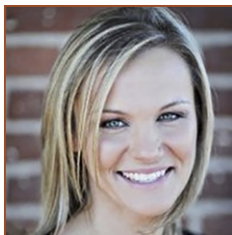
“Co-teaching is not a teaching assignment – co-teaching is a teaching experience”

Who: Co-teacher teams, administrators, specialists, instructional coaches, para educators, any combination of teacher teams.

Event Format: Zoom and Online Course Classroom (Participants have up to one week to complete this asynchronous segment)

Workshop Includes:

- **Introduction to Co-teaching:** What is TRUE co-teaching? Co-teaching Competency Framework
- **Partnership Development:** Review Tools and Resources to set up your co-taught classroom and partnership
- **Co-Planning:** Define your co-planning structure and review tools to create and infrastructure to plan
- **Co-Teaching Models:** Become Familiar with grouping configurations and how to use co-teaching models virtually



Presenter Martina Wagner, Ed.D has served English Language learners for over twenty years in grades pre-K through adult education. Her expertise includes best practice and programming for ELs, Sheltered Instruction, Co-teaching, Special Education Identification of ELs, WIDA standards, and English Language Learning assessments and data. Martina’s background in co-teaching spans from classroom to district implementation, professional developer, instructional coach, as well as strategic district action planning and implementation. Martina

has done extensive research throughout the United States on co-teaching and currently serves public, private, and charter schools as a professional development consultant.

Registration Fee:

\$50 [Metro ECSU Member](#); \$90 Non-member

Register online:

<http://metroecsus.myquickreg.com/register/event>

Registration Deadline: September 28, 2021

Cancellation Deadline: September 27, 2021

Registration Contact:

Angela Skrade, 612.638.1528,
angela.skrade@metroecsus.org

Location: Zoom and Online Course Classroom. A link will be provided after registration.

In compliance with the Americans with Disabilities Act, when special accommodations are needed, contact Angela Skrade (612-638-1528; <mailto:angela.skrade@metroecsus.org>) at least two (2) weeks before the event date. Special accommodation cancellation notices are accepted no later than two (2) business days before the event date. Cancellations after the deadline will be billed for special accommodations fees.