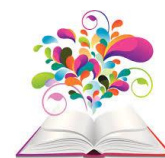


# The Catalyst Approach: Whole Group Classroom Leadership Classroom Management Strategies

June 27, 2023

8:00am - 4:00pm, Bethel Anderson Center



For Classroom Teachers, Administrators, and Directors

## About the event:

Jacki Brickman and Nancy Burns will facilitate the catalyst approach and teach participants to:

- Be even more proactive and equitable in their practice
- Develop approaches to support individuals and keep the rest of the group engaged in learning simultaneously
- Increase flexibility and reduce surprise
- Keep the focus on connections instead of student behavior
- Support facilitation instruction
- Provide trauma sensitive learning environments

The Catalyst Approach's Classroom Management Strategies promote strong and supportive relationships between educators and students through 12 easy and practical behavior management skills that are grounded in connection and aimed at disrupting patterns of frustration, confusion, and inquiry in the classroom.

Strategies are specific to shifting students attention, providing clear communication and engagement during lessons, and supporting success during times of independent and group practice or application of learning.

## Key Learning Objectives:

Participants are prepared to implement strategies that:

- Prioritize connection over compliance
- Build and preserve relationships with students while reducing the focus on student behavior
- Increase one's flexibility and reduce surprise in the classroom



## Each participant will receive The Foundational Skills & Beyond Introductory Workbook

**Jacki Brickman**, an award-winning teacher with a passion for helping everyone become better at what they do, Jacki is a pro at relating to people. She has a reputation for empowering people through her keen observations and insightful feedback. Be prepared for hilarious reenactments for her personal and professional experiences. Her ability to captivate diverse audiences suggests that she might just practice the communication skills she teaches. Jacki developed the Catalyst Approach with creative partner Nancy Burns.

**Nancy Burns**, a natural empath, Nancy is driven to find away to appreciate and to advocate for every teacher and student she works with. Her passion for increasing student learning aligns with her capacity for discovering and implementing communication strategies that stabilize classrooms and accelerate learning. Nancy has an intuitive ability to read a situation and know the next steps to take. Based in part on her own 22 years of classroom experience, Nancy developed the Catalyst Approach with creative partner Jacki Brickman.

**Fee:** [Metro ECSU member districts](#): \$400; Non-member districts: \$500

**Location:** Metro ECSU, 2 Pine Tree Drive, Arden Hills, MN, 55112

**Registration Information**

[Register online](https://metroecsus.myquickreg.com/register/event/) (https://metroecsus.myquickreg.com/register/event/)

**Registration Contact:** Brittany Stepan, Metro ECSU [brittany.stepan@metroecsus.org](mailto:brittany.stepan@metroecsus.org);  
612-638-1526

---

In compliance with the Americans with Disabilities Act, when special accommodations are needed, contact Brittany Stepan (612-638-1526; [brittany.stepan@metroecsus.org](mailto:brittany.stepan@metroecsus.org)) at least two (2) weeks before the event date. Special accommodation cancellation notices are accepted no later than two (2) business days before the event date. Cancellations after the deadline will be billed for special accommodations fees.